



Evaluation of an Organic Package of Practice Towards Green Gram Cultivation and Assessment of its Effectiveness in Terms of Crop Sustainability and Soil Quality Development

Antara Seal^{1*}, Ranjan Bera¹, Rupkatha Roy Chowdhury¹, Koushik Mukhopadhyay², Sudipta Mukherjee², Ajit Kumar Dolui³

¹Inhana Organic Research Foundation, Kolkata, India

²Howrah Krishi Vigyan Kendra (ICAR), West Bengal, India

³Dept. of Agricultural Chemistry and Soil Science, Calcutta University, West Bengal, India

ARTICLE INFO

Research Article

Received 11 November 2016

Accepted 28 December 2016

Keywords:

Trophobiosis theory

Inhana Rational Farming Technology

Healthy plants

Soil quality

*Corresponding Author:

E-mail: antaraseal77@gmail.com

ABSTRACT

Restoration of soil has been identified as the option; to ensure crop sustainability. However, as per Trophobiosis Theory of French Scientist F. Chaboussou, focus on development of healthy plants is necessary to abate pest and disease invasion so as to ensure sustained crop performance, even under unfavorable environmental conditions. The present study, in randomized block design with green gram as test crop; was undertaken in Krishi Vigyan Kendra (Howrah, West Bengal) to evaluate the effectiveness of Inhana Rational Farming (IRF) Technology towards crop yield and soil quality development under different sustainable models *viz.* organic cultivation, integrated soil with organic crop management and non- chemical crop management; as compared to conventional farming practice. Highest yield was recorded under organic (933 kg ha⁻¹) followed by integrated (921 kg ha⁻¹) and non- chemical plant management (902 kg ha⁻¹). The results were well corroborated with the plant development index obtained under these treatments. Favorable trend of soil quality under sustainable models especially in terms of microbial properties indicated the role of quality compost towards speedy rejuvenation of soil dynamics. The study indicated that reduction of synthetic fertilizers and qualitative management of soil is essential to restrict yield decline. However, plant management shall be prerequisite for ensuring crop sustainability without any time lag and under the changing climatic patterns. In this respect the potential of IRF Technology has been well accounted.

DOI: <https://doi.org/10.24925/turjaf.v5i5.536-545.1081>

Introduction

In the 1960s, green revolution had helped to enhance food production but in exchange of irreversible loss of soil fertility, ecological degradation and food toxicity. Indiscriminate use of synthetic fertilizers and pesticides led to (Baishya, 2015; Hazell, 2003) destruction of soil micro-organisms and friendly insects (Xiang, 2012), making the crop more prone to diseases and depleting soil fertility; due to widening gap between nutrient removal and supplies (Mathur et al., 2010). Arresting the decline of soil organic matter has become necessary to restrict the unabated soil degradation and imperiled sustainability of agriculture (Mahdi et al., 2010). Rejuvenation of soil micro flora through application of compost/ organic manure (with proper quality control) can serve well towards the objective (Ramesh, 2008). But to re-establish the soil-plant-nutrient dynamics towards the sustainability objective, there has to be a wholesome compatibility between soil and plant system, unattainable by application

of compost alone. An approach towards re-establishment of healthy soil should be abreast of comprehensive actions towards simultaneous development of healthy plant.

Inhana Rational Farming (IRF) Technology, a comprehensive Organic Package of Practice (POP), has shown promising results in various crops (Bera et al., 2014; Barik et al., 2014b); especially tea (Mazumdar et al., 2014; Bera et al., 2011; Seal et al., 2013); in the backdrop of changing climatic patterns. The technology, which provides an effective and adoptable Road Map for large scale organic agriculture; is an amalgamation of ancient wisdom and modern scientific knowledge bearing the core essence of Trophobiosis Theory of French Scientist, F. Chaboussou (Chaboussou, 1985). The present study was undertaken to evaluate the effectiveness of this organic POP towards yield sustainability and soil quality development, taking green gram as test crop.

Materials and Methods

Study Area

The study was conducted at Krishi Vigyan Kendra (Block: Jagatballavpur, District: Howrah, West Bengal, India) during 2014-15 (Pic. 1), taking green gram (cv. Samrat; PDM-84-139) as test crop. Experiment was laid out as per Randomized Block Design with 5 treatments (Table 1) and three replications. Situated in the hot, moist, sub-humid ecosystem (Agro-ecological zone 15.1) with alluvium derived soils and growing period of 210-240 days (Velayutham et al., 1999), the region receives annual rainfall of 1500 mm (75-80% received during June to September). With temperature fluctuation of 40.2° to 10.8°C, the soil of this area has been formed from deposits of alluvium brought down by river Ganga and its tributaries.

Inhana Rational Farming (IRF) Technology

Inhana Rational Farming Technology (IRF) developed by Indian Scientist Dr. P. Das Biswas, is a comprehensive organic POP aiming at restoration of soil and plant health that simultaneously deflates pest pressure due to alleviation factors responsible for pest – parasite interactions (Bera et al., 2014). The package works towards (i) energization of soil system i.e., enabling the soil to function naturally as an effective growth medium for plants and (ii) energization of plant system i.e., enabling higher nutrient use efficiency alongside better bio-chemical functions that leads to activation of the plants' host defense mechanism (Barik et al., 2014a). Soil energization aimed at rejuvenation of soil microflora, is primarily attended by application of on-farm produced Novcom compost (that contains rich population of self-generated micro flora) (Seal et al., 2012); different types of herbal concoctions and adoption of cultural practices. However, the technology emphasizes plant management as a precursor for resilient plant system that can ensure sustainability even under changing climatic patterns. Plant management under this technology is a systemic approach that utilizes a set of potentized and energized botanical solutions developed on Element Energy Activation (EEA) Principle. According to EEA Principle, radiant solar energy is stored in plants and the bound or stored energy components from energy rich plants are extracted on specific day, time, by specific extraction procedure and subsequently potentized so that energy components can be effectively received by plant system for activation of various metabolic functions. Each solution has one or more defined functions, but work in an integrated manner when applied in a schedule, for bringing about harmonized plant growth with ensured aggregation of biological compounds responsible for flavor, nutrition and medicinal properties.

Production of Novcom Compost

Novcom compost was produced at Krishi Vigyan Kendra using banana stump and fresh cow dung (80:20 ratio) utilizing Novcom composting method¹⁴. The compost attained maturity within 21 days as indicated by earthy smell and brownish coloration, further confirmed by maturity and phytotoxicity analysis in the laboratory.

The Hypothesis

Inhana Rational Farming Technology that aims at developing healthy plants; bears the essence of Trophobiosis theory (Chaboussou, 1985). The technology reaches to the root cause of pest problem and works towards amelioration of factors that favourably signal pest/disease interference (Fig 1). Alleviation of biotic and abiotic factors, that depress plant metabolism require a prolonged stepwise programme and might not be still completely manageable. On the other hand focusing on plant management towards activation of plants' metabolic functions alongside other curative steps; can sustain yield and provide a way out from the vicious cycle of pesticides in a time bound manner.

For all experimental plots, land was prepared by deep ploughing followed by laddering. Seeds were sown @ 30kg/ha. Seeds for T₂, T₃ and T₄ were organically treated with seed solution-2 prior to sowing. Seeds for T₅ were treated with 1% concentration of potassium chloride. In T₂ plots (OCM), Novcom compost was mixed with soil @ 7.5 ton/ha during land preparation and cow dung slurry concoction (CDS) was sprayed thereafter on soil @ 100 ltr/ha. In T₄ (NCPM) and T₅ plots (CCM), NPK was applied @ 20:40:40 kg/ha in the form of urea, single super phosphate and muriate of potash. In T₃ (ICM) plot half dose of Novcom compost and synthetic fertilizer was applied in a combined manner at 50:50 ratio. One third of synthetic nitrogen fertilizer and full dose of phosphorus and potash were applied during land preparation while rest was given at 25 days after sowing (DAS). For organic plant management, seven rounds of different Inhana solutions (single or in combination) were sprayed as per recommended schedule (Table 2) towards activation of plant metabolic functions in T₂, T₃ and T₄ experimental plots (Table 3). In T₅, nitrobenzene was sprayed as growth regulator before flower bud initiation stage and one round of pesticide (combination of Propanophos and acephate) was applied @ 1.5 ml/ltr. water to counter mild infestation of stem borer and sucking pest at 45 DAS. Two rounds of weeding were carried out at 20 DAS and again at 45 DAS. Other intercultural operations like thinning and irrigation were done equally under all treatments as and when required; to ensure best performance by plants.

Generation of Agronomic Data Base

Ten sample plants were randomly selected from each plot for taking necessary data. Agronomic parameters *viz.* root length, shoot length, number of leaves and fresh weight of both root and shoot were recorded from matured sample plants following standard technique. Number of branches, pod cluster as well as root nodules for each plant were also noted. Number of pods/cluster, pod length, number of pods per plant, number of seeds/pod and 1000 seed weight are the parameters which directly attribute to yield. These were recorded from the ten sample plants at harvesting followed by calculation of mean value (Manoj et al., 2014). Crop was harvested at 85 DAS and plot wise crop yield was documented for all the five treatments. Relative agronomic efficiency was calculated according to Law-Ogbomo et al. (2011).

Table 1 Treatment details

1.	T ₁ :	Control [No fertilizer or pesticide applied]. (C)
2.	T ₂ :	Organic Green gram Cultivation [utilizing Inhana Rational Farming (IRF)] (OCM)
3.	T ₃ :	Integrated Green gram cultivation [synthetic fertilizer and compost at 50:50 alongside organic plant and pest management] (ICM)
4.	T ₄ :	Non- chemical Plant Management [use of plant management package under Inhana Rational Farming (IRF)] alongside synthetic fertilizer for soil management (NCPM)
5.	T ₅ :	Conventional Green gram Cultivation. (CCM)

Table 2 Spraying schedule of the Inhana Solutions

Sl. No	Solution Name	Dose & Dilution	Time of application
1.	IB (Ag)- 1	750 mlha ⁻¹	3 leaf stage
2.	IB (Ag) -2	750 mlha ⁻¹	7 days after 1 st spray
3.	IB (Ag) - 4	750 mlha ⁻¹	7 days after 2 nd spray
4.	IB(Ag)-5+ IB(Ag) - 7	750 mlha ⁻¹ (each)	7 days after 3 rd spray
5.	IB (Ag)- 3 + IB(Ag)- 7	750 mlha ⁻¹ (each)	7 days after 4 th spray
6.	IB (Ag) -2	750 mlha ⁻¹	7 days after 5 th spray
7.	IB (Ag)- 1	750 mlha ⁻¹	7 days after 6 th spray

Note: IB (Ag) - 7 is added with other Inhana solutions to enhance the potency of primary solution.

Table 3 Details of the solutions for organic plant management and their respective role in plant physiological development.

1.	Seed solution- 2: The solution is biologically activated and potentized extract of <i>Calotropis procera</i> R. and <i>Tinospora crispa</i> Miers. It plays role in mineralization of metabolic resources during germination, faster independence of seedling from the seed reserve, photosynthesis enhancement and increased uptake of organic and inorganic solutes through roots.
2.	IB (Ag)- 1 : The solution is biologically activated and potentized extract of <i>Hyoscyamus niger</i> L., <i>Ficus benghalensis</i> L. and <i>Dendrocalamus strictus</i> Nees. It acts as an organic growth promoter, activator and regulator. It energizes and stimulates the plant system for efficient use of soil nutrients (both applied and stored). It also regulates every stage of Grand Growth Period; influencing growth correlation.
3.	IB (Ag)- 2 : The solution is biologically activated and potentized extract of <i>Ocimum sanctum</i> L. , <i>Calotropis procera</i> R. and <i>Cynodon dactylon</i> (L.) Pers. It acts as silica induced immunity against fungal attack. It activates plants' host defense mechanism through silica management providing structural defense against fungal pathogens. It also stimulates plants' immune system by activating the biosynthesis of different phenolic compounds having fungi-toxic property.
4.	IB (Ag)- 3: The solution is biologically activated and potentized extract of <i>Adhatoda vasica</i> Nees., <i>Zingiber officinale</i> Roscoe and <i>Embelia ribes</i> Burm. f. It acts as an organic solution for potash absorption and utilization. It increases the efficiency of potash uptake through energized root capacity so that gradual reduction in application is ensured. At the same time it activates suction pressure by influencing diffusion pressure deficit.
5.	IB (Ag) – 4: The solution is biologically activated and potentized extract of <i>Calotropis procera</i> R., <i>Dendrocalamus strictus</i> Nees. and <i>Bombax malabaricum</i> D.C. It ensures biological absorption of atmospheric-N directly by plant. It helps the plant to utilize atmospheric nitrogen and balances the quantity of nitrogen within plant system at the specific time so as to prevent its deleterious effect on end product quality.
6.	IB(Ag) - 5 : The solution is biologically activated and potentized extract of <i>Cynodon dactylon</i> (L.) Pers. and <i>Calotropis gigantea</i> L. It energizes the various biochemical process of the plant resulting in harmonious grand growth period. It regulates and stimulates the cellular oxidation process. It energizes the phloemic function resulting in encouraged translocation of organic solutes. Stimulates the hydrolysis of starch to D-Glucose units by enhancing enzymatic activity.
7.	IB(Ag) - 7 : The solution is biologically activated and potentized extract of <i>Ocimum sanctum</i> L. It stimulates the root function, activates root growth/ penetration and energizes soil in the root zone thus improving soil-plant relationship. It helps to improve soil CEC, energizes the production of micro-flora and bio-flora around the root zone, improves the degree of base saturation to the desired level and enhances the root cation exchange capacity. It stimulates the root growth and penetration by activating the contact exchange capacity of the root.

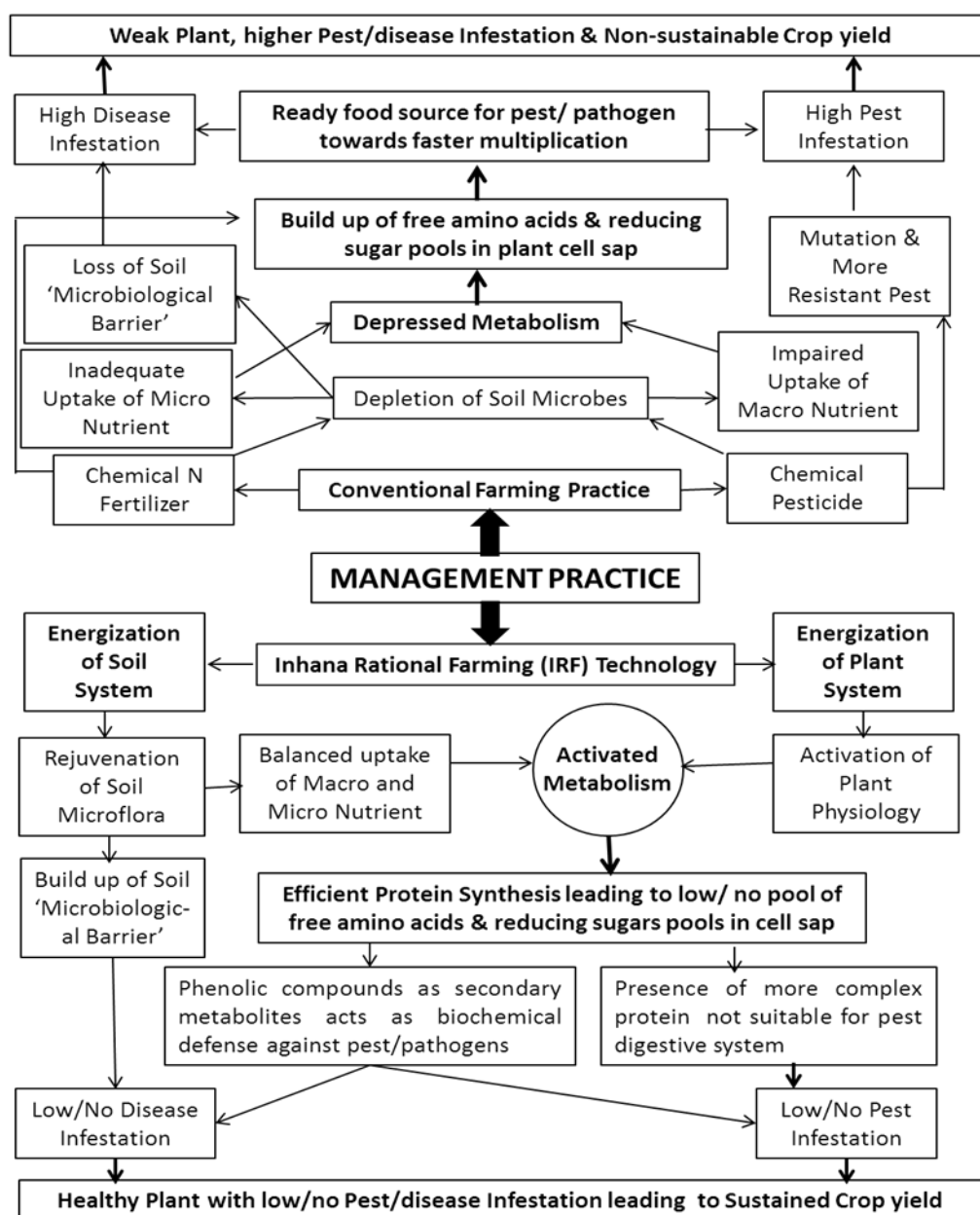


Fig. 1 Principle of IRF Technology in comparison to conventional farming practice for crop sustainability in light of Trophobiosis Theory of F. Chaboussou

Plant Development Index (PDI)

Performance of green gram under different treatments was adjudged through various agronomic parameters viz. plant dry weight, number of branches/ plant, number of pods/ plant, pod length, number of seeds/ pod and 1000 seed weight. However, to understand treatment effect towards overall plant development, Plant Development Index (PDI) was calculated using the method described by Bera et al. (2014).

$$PDI = 1/n \left\{ \sum \frac{100(X_1 - C_1)}{C_1} + \frac{100(X_2 - C_2)}{C_2} + \frac{100(X_n - C_n)}{C_n} \right\}$$

- PDI: Plant Development Index
- X : Agronomic parameters of treatments
- C : Respective agronomic parameter of control
- n : No. of agronomic parameters taken for observation

Compost Analysis

12 samples were collected from the compost heap prepared on- farm in the study area; for analysis of compost quality as per standard methodologies (Black 1965; Jackson 1973; Trautmann and Krasny, 1997). This was followed by estimation of Compost Quality Index as per the equation formulated by Bera et al. (2013).

$$CQI = \frac{NV_{NPK} \times MP \times GI}{C/N \text{ Ratio}}$$

- Where;
- CQI :Compost Quality Index
- NV_{NPK} :Total nutrient value in terms of total (N+P₂O₅+K₂O) percent.
- MP :log₁₀ value of total microbial population in terms of total bacteria, total fungi and total actinomycetes.
- GI :Germination Index.

Classification of compost as per Compost Quality Index	
Compost Quality Index (CQI)	Compost Quality Classification
< 2.00	Poor
2.00 – 4.00	Moderate
4.00 – 6.00	Good
6.00 – 8.00	Very Good
8.00 – 10.00	Extremely Good



Pic. 1 Location map of the study area

Soil Analysis

15 soil samples were collected from the different treatment plots before initiation of experiment and post crop harvest; for analysis of physicochemical, fertility and biological properties of soil following the methodology suggested by Weaver et al. (1998).

Statistical analysis *viz.* standard error and Duncan's New Multiple Range Test (MRT) were done using the statistical package SPSS 11.5.

Results and Discussion

Evaluation of Novcom Compost Quality

Transformation of composting material to dark brown colour with an earthy smell was recorded around 21 days composting period (Pic. 2). Such changes are expected to be adequate for promoting plant growth (Radovich and Arancon, 2011) and are indicative of compost maturity (Epstein, 1997). Moisture percent in compost was found to be 58.65 percent; suggesting it ideal for microbial sustenance (Table 4). Average value of compost pH (7.11) was well within the stipulated range for good quality and mature compost (Jiménez and Garcia 1989) indicating lower chances of NH_3 volatilization and favourable for balanced micro flora generation (Nain et al., 2009). The organic carbon content (32.29 percent) fulfilled the criteria for good composting and rendered the compost suitable even for nursery application; as per the

standards of Australian composting council (Australian Standard, 1999). Nutrient content in terms of total NPK was considerably higher than minimum suggested range by Alexander (1994), authenticating its rich nutrient status. C/N ratio was within the reference range of ≤ 20 as suggested for maturity and suitability of the compost for soil application (FAI, 2007). Microbial status of compost is one of the most important parameter for judging compost quality because microbes are the driving force behind soil rejuvenation and play a crucial role towards crop sustenance by maintaining soil-plant-nutrient dynamics (Seal et al., 2015). Microbial population in the compost samples were in the order of 10^{14} to 10^{16} c.f.u. per gm moist compost. Generation of such huge microbial population in the final compost may have been facilitated by the presence of an ideal micro-atmosphere within composting heap (Seal et al., 2012). Mean microbial respiration as expressed by CO_2 evolution rate (2.21 mg CO_2 -C/g OM/day) was within the stipulated range of 2.0 - 5.0 as proposed by Trautmann and Krasny (1997) for stable compost. The phytotoxicity bioassay test, as represented by germination index ranged between 0.87 and 1.32 signifying the absence of phytotoxic effect in final compost; as suggested by Trautmann and Krasny (1997). Compost quality index (Bera et al., 2013) was estimated to adjudge the overall quality of compost and index value of 3.48 to 5.96 indicated Novcom compost to be of moderate to good quality.

Growth Response of Green Gram under Different Treatments

The agronomic parameters considered for evaluation of plant growth response was found to vary significantly under different treatments (Table 5). Root length, root fresh weight and number of nodules per plant; which play important role towards higher crop response were found to be significantly higher under organic management (OCM) as compared to that recorded in case of conventional treatment (CCM). Higher growth under OCM may be due to compost application in soil, which perhaps fashioned a hospitable micro- environment for bacteria to thrive well and have good symbiotic association resulting in better crop response. In terms of above ground characters too as expressed by shoot length, fresh weight of shoot, number of leaves, branches and cluster per plant; higher values were noted wherever above ground synthetic inputs were completely shunned and the plants received organic management (i.e., irrespective of OCM, ICM and NCPM treatment). This may be due to stimulatory effects of organic plant management on cell division, enlargement as well as protein and nucleic acid synthesis (El-Banna et al., 2006).

Yield Components under Different Treatments

Yield components *viz.* number of pod per plant, pod length, number of seed per pod and 1000 seed weight showed significant variation among the different treatments (Table 6). Higher value of these characters ensure better crop yield, which in turn are governed by various plant metabolic functions *viz.* phloem transport

that determine how efficiently photosynthates are made available to the harvestable plant parts (Thavaprakash et al., 2006). The study revealed that focus on plant management towards activation of plants' metabolic functions may have influenced higher pod and seed characters under OCM followed by ICM and NCPM; as compared to CCM. The results were corroborated by the findings of several other researchers (Sengupta et al., 2011; Barik et al., 2014b; Bera et al., 2014).

Plant Development Index

Plant Development Index (PDI) was used to understand the impact of different treatments towards overall crop performance. Index value was found to be significantly higher in case of organically treated plots (OCM) and a general higher trend was noted in case of all other treatments (i.e., ICM and NCPM) where organic management was applied above ground, in place of conventional synthetic inputs (Fig 2).

Comparative study of PDI under different treatments brought forth the relevance of organic soil and plant management and the importance of activated plant physiology towards development of healthy plants. Conventional management practice on the other hand failed to support healthy plants due to the ill effects of agrochemicals and pesticides on plant metabolic functions (Altieri and Nicholls, 2003).

Yield Performance of Green Gram under Different Treatments

Highest yield of green gram was recorded under organic management practice (933 kg ha^{-1}) followed by ICM (921 kg ha^{-1}) and NCPM (902 kg ha^{-1}) (Fig 3). At the same time significantly higher yield as compared to CCM (819 kg ha^{-1}) was noted under all other treatments where IRF plant management schedule was adopted in place of synthetic inputs; irrespective of the type of soil management undertaken. Higher crop yield under organic plant management indicated the favourable impact of activated plant metabolic functions considering the positive correlation between enhanced photosynthesis, biomass, and yield. When other genetic factors are not altered, increasing photosynthesis leads to yield increase (Long et al., 2006; Sevik and Cetin, 2015; Yigit et al., 2016; Guney et al., 2016) as higher rates of photosynthesis may be caused by greater N allocation to Rubisco (Makino et al., 1992) and higher mesophyll conductance (von Caemmerer and Evans, 1991). Rubisco is the primary CO₂ fixation enzyme, and the amount and kinetic properties of this enzyme strongly affect the photosynthetic rate. Relative agronomic efficiency (RAE) or the comparative measure of gain in yield (Devasenapathy et al., 2008) under different treatments, also pointed towards the need for developing healthy plants; efficient nutrient absorption, photosynthesis and assimilation being the sole key for enhancing crop productivity.

Table 4 Evaluation of on-farm produced Novcom compost quality.

Sl No	Parameters	Novcom compost	
		Range Value	Mean
1.	Moisture (%)	62.24- 66.04	64.65 ± 2.79
2.	pH _{water} (1 : 5)	6.69 – 7.65	7.11 ± 0.32
3.	Organic carbon (%)	31.55 – 33.04	32.29 ± 1.09
4.	Total NPK (%)	3.05 – 3.74	3.31 ± 0.12
5.	C/N ratio	16.9:1 – 17.5:1	17.5:1 ± 0.10
6.	Total bacterial count (per gm moist compost)	(23–49) x 10 ¹⁶	33x10 ¹⁶ ± 5.3x10 ¹⁶
7.	Total fungal count (per gm moist compost)	(24 – 48) x 10 ¹⁴	31x10 ¹⁴ ± 2.2 x10 ¹⁴
8.	Total actinomycetes count (per gm moist compost)	(21–39) x 10 ¹⁴	31x10 ¹⁴ ± 2.1 x10 ¹⁴
9.	CO ₂ evolution rate (mgCO ₂ – C/g organic matter/day)	1.53 – 2.79	2.21 ± 0.18
10.	Germination index (phytotoxicity bioassay)	0.87 – 1.32	1.09 ± 0.03
13.	Compost Quality Index	3.48 – 5.96	4.72 ± 0.08

Table 5 Agronomic parameters indicating crop response under different treatments.

Parameters	T ₁ : C	T ₂ : OCM	T ₃ : ICM	T ₄ : NCPM	T ₅ : CCM
Shoot Length	68.23 ^c ±2.03*	76.45 ^{ab} ±2.01	74.41 ^b ±1.79	78.11 ^a ±3.21	77.15 ^{ab} ± 2.19
Root length	25.46 ^d ±0.84	29.76 ^a ±0.95	28.79 ^{ab} ±1.02	28.07 ^{ab} ±0.97	27.01 ^c ±1.32
No. of leaves	8.8 ^d ±0.22	10.60 ^a ±0.24	10.40 ^{ab} ±0.21	9.5 ^c ±0.13	10.60 ^a ±0.22
Fresh wt. of shoot	92.4 ^c ±4.03	109.4 ^{cd} ±3.29	111.5 ^c ±3.27	124.5 ^a ±3.33	119.6 ^b ± 2.13
Fresh wt. of root	8.79 ^d ±0.04	10.47 ^a ±0.06	10.01 ^{ab} ±0.05	9.96 ^b ± 0.05	9.67 ^{bc} ± 0.07
Shoot : Root ratio	10.51 ^d ±0.23	10.45 ^d ±0.31	11.14 ^c ±0.47	12.5 ^a ±0.39	12.37 ^{ab} ± 0.17
No. of branches/ plant	2.20 ^{cd} ± 0.01	3.40 ^{ab} ±0.01	3.60 ^a ± 0.01	2.40 ^c ± 0.01	2.40 ^c ± 0.01
No. of cluster/ plants	5.10 ^{cd} ±0.01	7.20 ^a ±0.02	6.40 ^b ±0.02	5.20 ^c ±0.01	4.40 ^e ± 0.03
No. of root nodule/ plant	7.20 ^d ±0.04	12.4 ^a ±0.06	11.6 ^b ±0.06	10.4 ^{bc} ± 0.09	7.0 ^d ± 0.08

*Standard Error [±]. The means marked with different letters in the same row were significantly different at P<0.05 of Duncan's New Multiple Range Test.

Table 6 Comparison of the yield attributing characteristics under different treatments.

Treatments	Number of Pods/ plant	Pod length (cm)	No. of Seeds /Pod	1000 Seed Weight (gm)
T ₁ : C	10.2 ^d ± 0.314*	7.44 ^c ± 0.21	8.1 ^c ± 0.203	28.12 ^c ± 0.432
T ₂ : OCM	14.1 ^a ± 0.405	8.04 ^a ± 0.31	9.8 ^a ± 0.212	31.98 ^a ± 1.102
T ₃ : ICM	13.6a ^b ± 0.406	8.01 ^{ab} ± 0.41	9.6 ^{ab} ± 0.310	30.69 ^{ab} ± 1.021
T ₄ : NCPM	13.3 ^b ± 0.531	8.09 ^a ± 0.22	9.5 ^{ab} ± 0.312	30.65 ^{ab} ± 1.321
T ₅ : CCM	12.5 ^c ± 0.421	7.94 ^b ± 0.19	9.4 ^{ab} ± 0.322	30.58 ^{ab} ± 0.234

*Standard Error [±]. The means marked with different letters at the same column were significantly different at P<0.05 of Duncan's New Multiple Range Test.

Table 7 Physicochemical properties and soil fertility under different treatments pre and post experimentation.

Treatments	Soil Physicochemical Properties			Soil Fertility			
	pH (1 : 2.5)	EC (dSm ⁻¹)	Org C (%)	Av N kg ha ⁻¹	Av. P ₂ O ₅	Av. K ₂ O	Av. SO ₄
T ₁ : C	7.17 (7.15)*	0.077 (0.077)	1.27 (1.27)	360.29 (334.61)	56.16 (55.94)	392.03 (388.97)	85.76 (84.59)
T ₂ : OCM	7.25 (7.27)	0.078 (0.078)	1.27 (1.30)	353.40 (365.95)	57.81 (59.50)	382.81 (384.38)	84.33 (85.67)
T ₃ : ICM	7.26 (7.27)	0.073 (0.073)	1.27 (1.26)	346.39 (354.12)	56.21 (58.03)	381.09 (382.83)	74.80 (77.62)
T ₄ : NCPM	7.30 (7.28)	0.076 (0.076)	1.26 (1.26)	349.00 (354.28)	57.93 (59.32)	374.87 (379.25)	78.05 (79.41)
T ₅ : CCM	7.38 (7.36)	0.078 (0.078)	1.23 (1.22)	356.36 (359.76)	56.15 (57.15)	377.92 (380.27)	74.40 (73.92)

*Figures in parenthesis indicate values obtained post-harvest.

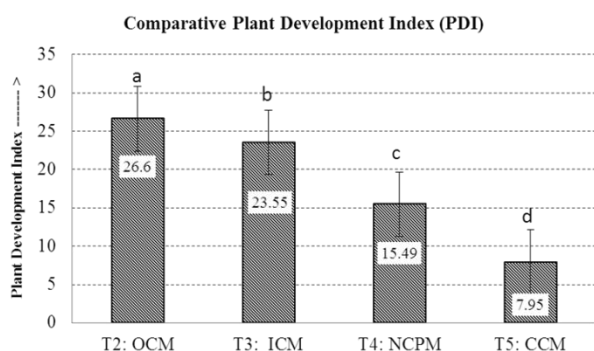


Fig 2 PDI under different management practices.

Evaluation of Soil Quality

Evaluation of soil quality under different treatments pre and post experimentation revealed no considerable changes in soil pH and EC. However, slight increase in organic carbon was noted in case of OCM plots. Available N, P, K and S showed increasing trend under all treatments, other than control (Table 7). In OCM plots, comparative higher value of available- N may be due to efficient fixation of atmospheric N through symbiotic legume – *Rhizobium* association (Bohloul et al., 1992).

Soil micro-organisms play a significant role in regulating the dynamics of organic matter decomposition and availability of plant nutrients (Chen, 2006). An important feature of green gram crop is its ability to establish a symbiotic partnership with specific bacteria, setting up biological N₂-fixation in its root nodules that supply the plant's needs for N₂ (Mahmood and Athar,

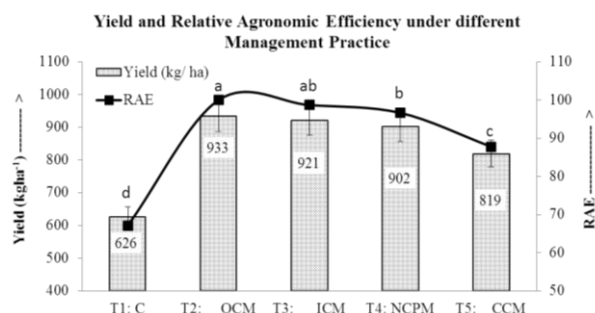


Fig 3 Crop productivity and RAE (Relative Agronomic Efficiency) under different treatments.

2008). High values of soil MBC, FDAH activity, etc. in case of OCM followed by ICM treatment plots indicated the favorable role of compost towards soil micro flora rejuvenation, which was applied for full or partial soil management under these treatments (Fig 4). On the other hand, comparatively higher soil basal respiration, qCO₂ and Q_r values (as noted for CCM treatment plots) indicated environmental stress and higher expense of energy by soil microbial community for sustenance; rather than for growth aspects (Anderson and Domsch, 1985).

Conclusion

Healthy Plants i.e., the essence of Trophobiosis Theory can be practically demonstrated only by such cultivation practice which imparts focus towards

activation of plant metabolism alongside soil quality rejuvenation. The study indicated the scope for attaining higher crop productivity even without tweaking crop genetics, through adoption of a cultivation practice that fosters positive correlations between enhanced photosynthesis, assimilation and phloem transport i.e., the attributes of Healthy Plants; apart from facilitating the dynamics of organic matter decomposition and plant nutrient availability. Highest plant growth, yield response as well as qualitative development of soil especially microfloral attributes under Inhana Rational Farming (IRF)

indicated the relevance of comprehensive organic approach towards reversal of the imperilled sustainability in agriculture. At the same time higher yield aspects under organic plant management (as imparted by IRF plant management) alongside partial/ no substitution of synthetic fertilizers with compost, indicated the scope for yield sustenance even under complete stoppage of synthetic pesticides and reduction of synthetic fertilizers, which are primary causal factors behind ecological destruction and food toxicity.

Variation in Microbial properties of soil under different treatments

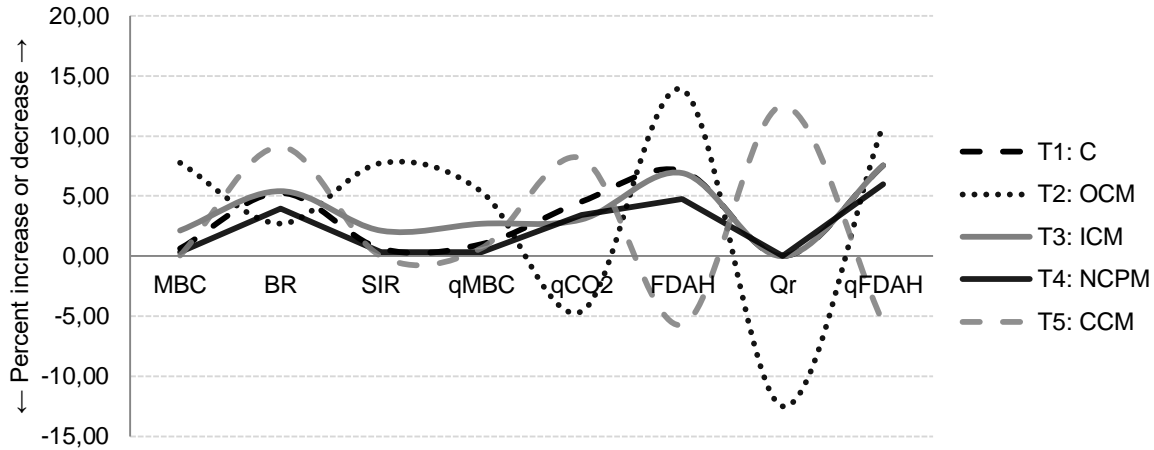


Fig 4 Percent variation in soil microbial properties under different treatments pre and post experimentation
 MBC: Microbial Biomass Carbon; BR: Basal Respiration; SIR: Substrate Induced Respiration; qMBC: Microbial quotient; qCO₂: microbial metabolic quotient; FDAH: Fluorescent Di-Acetate Hydrolysis; Qr: microbial respiration quotient; qFDAH: FDAH per unit organic carbon.



Pic. 2 Novcom compost and green gram at Howrah KVK (ICAR), India

Acknowledgement

Authors would like to express gratitude to Dr. P. Das Biswas for providing guidance regarding organic management under IRF Technology and Inhana Biosciences for providing part finance for conducting the project. Authors are thankful to Department of Agricultural Chemistry and Soil Science (Calcutta University) and Krishi Vigyan Kendra (ICAR, Howrah; West Bengal) for lending infrastructural facilities for conducting the project.

References

- Alexander RA. 1994. Standards and guidelines for compost use. *Biocycle*, 35(12): 37-41.
- Altieri M, Nicholls A. 2003. Soil fertility management and insect pests: harmonizing soil and plant health in agroecosystems. *Soil and Tillage Research*, 72(2): 203-211.
- Anderson TH, Domsch KH. 1990. Application of eco-physiological quotients (qCO₂ and qD) on microbial biomasses from soils of different cropping histories. *Soil Biol. Biochem.*, 22: 251-255.
- Australian Standards. 1999. 4454: 1999. Composts, soil conditioners and mulches. Homebush, NSW: Standards Association of Australia.
- Baishya K. 2015. Impact of Agrochemicals application on Soil Quality Degradation- A Review. *International Journal of Science Technology and Management*, 4 (1): 220-228.
- Barik AK, Chatterjee AK, Datta A, Saha S, Bera R Seal A. 2014a. Evaluation of Inhana Rational Farming (IRF) Technology as an Effective Organic Option for Large Scale Paddy Cultivation in Farmer's Field – A Case Study from Kowgachi-II Gram Panchayat, North 24 Parganas, West Bengal. *The International Journal of Science and Technoledge*, 2(5): 183-197.
- Barik AK, Chatterjee AK, Datta A, Bera R, Seal A. 2014b. Evaluation of Inhana Rational Farming (IRF) technology as an effective organic package of practice- a case study from state horticultural research and development station, Krishnagar, Nadia, West Bengal. *Central European Journal of Experimental Biology*, 3(3): 1-15.
- Barik AK, Chatterjee AK, Mondal B, Datta A, Saha S, Nath R, Bera R, Seal A. 2014. Adoption of Rational Farming Technology for Development of a Model for Exploring Sustainable Farming Practice in Farmer's Field. *The International Journal of Science and Technoledge*, 2(4): 147-155.
- Bera R, Datta A, Bose S, Dolui AK, Chatterjee AK, De GC, Barik AK, Sarkar RK, Majumdar D, Seal A. 2013. Comparative Evaluation of Compost Quality, Process Convenience and Cost under Different Composting Method to assess their Large Scale Adoptability Potential as also Complemented by Compost Quality Index. *International Journal of Scientific and Research Publications*, 3(6): 406-417.
- Bera R, Datta A, Saha S, Dolui AK, Chatterjee AK, Sarkar RK, De GC, Barik AK, Majumdar D, Sahoo SS, Bhattacharyya P. 2011. Relevance of Comprehensiveness over Compartmental Approach towards Sustainable Organic Tea Production: A Case Study under CFC-TBI Project at Maud Tea Estate. In: *Proceedings of Tea Organic: Low Carbon International Symposium*. Guangyuan, China, 6-9 June, 2011. pp: 428-442.
- Bera R, Seal A, Datta A, Sengupta K. 2014. Evaluation of Inhana Rational Farming Technology as an Organic Package of Practice for Effective and Economic Vegetable Cultivation in Farmers' Field. *J. Nat. Prod. Plant Resour.*, 4 (3): 82-91.
- Black CA. 1965. *Methods of soil analysis*, Part 1 and 2. Madison, Wisconsin, USA: American Society of Agronomy Inc.
- Bohlool BB, Ladha JK, Garrity DP, George T. 1992. Biological nitrogen fixation for sustainable agriculture: A perspective. In: Ladha JK, George T, Bohlool BB, (Eds.). *Developments in Plants and Soil science*, vol. 49. Netherlands: Springer. pp:1-11.
- Chaboussou F. 1985 (English 2004 trans. *Healthy Plants, A New Agricultural Revolution*. Charlbury, UK: Jon Carpenter.
- Chen JH. 2006. The Combined Use of Chemical and Organic Fertilizers and/or Bio fertilizer for Crop Growth and Soil Fertility. In: *International Workshop on Sustained Management of the Soil-Rhizosphere System for Efficient Crop Production and Fertilizer Use*. Bangkok, Thailand, 16 – 20 October 2006. pp: 1-11.
- Devasesanapathy P, Ramesh T, Gangwar B. 2008. Efficiency indices for Agriculture Management Research. In: *Nutrient Management Studies*. New Delhi: New India Publishing Agency. pp: 34.
- El-Banna EN, Ashour SA, Abd El-Salam HZ. 2006. Effect of foliar application with organic compounds on growth, yield and tubers quality of potato (*Solanum tuberosum* L.). *J Agric Sci Mansoura University*, 31: 1165-1175.
- Epstein E. 1997. *The science of composting*. Lancaster, PA: Technomic Publishing.
- FAI [Fertilizer Association of India]. 2007. *The Fertilizer (control) Order 1985*. New Delhi, India: FAI.
- Guney K, Cetin M, Sevik H, Guney KB. 2016. Influence of germination percentage and morphological properties of some hormones practice on *Lilium martagon* L. Seeds. *Oxidation communications*, 39(1): 466-474.
- Hazell PBR. 2003. The Green Revolution. In: Mokyr J. (ed.) *The Oxford Encyclopedia of Economic History*. UK: Oxford University Press. pp: 478-480.
- Jackson ML. 1973. *Soil chemical Analysis*. New Delhi: Prentice Hall of India Pvt. Ltd.
- Jime'nez IE, Garcia PV. 1989. Evaluation of city refuse compost maturity: A Review. *Biological Wastes*, 27: 115-42.
- Law-Ogbomo KE, Remison SU, Jombo EO. 2011. Effects of organic and inorganic fertilizer on the productivity of *Amaranthus cruentus* in an ultisol environment. *International Journal of Plant Physiology and Biochemistry*, 3 (14):247 - 252.
- Long SP, Zhu XG, Naidu SL, Ort DR. 2006. Can improvement in photosynthesis increase crop yields? *Plant Cell Environ*, 29: 315-330
- Mahdi SS, Hassan GI, Samoon SA, Rather HA, Dar SA, Zehra B. 2010. Bio-fertilizers in organic agriculture. *Journal of Phytology*, 2(10): 42-54.
- Mahmood A, Athar M. 2008. Cross inoculation studies: Response of *Vigna mungoto* inoculation with rhizobia from tree legumes growing under arid environment. *Int J Environ Sci Technol*, 5:135-139.
- Makino A, Sakashita H, Hidema J, Mae T, Ojima K, Osmond B. 1992. Distinctive responses of ribulose-1,5-bisphosphate carboxylase and carbonic anhydrase in wheat leaves to nitrogen nutrition and their possible relationships to CO₂ transfer resistance. *Plant Physiol.*, 100: 1737-1743.
- Manoj S, Singh RK, Singh AN, Ram H, Prasad SR. 2014. Growth, yield attributes and quality of summer greengram (*Vigna radiata* L.) as influenced by nitrogen and irrigation levels. *Ann. Agric. Res.*, 35 (1): 47-53.
- Mathur N, Singh J, Bohra S, Bohra A, Vyas A. 2010. Microbes as biofertilisers. In: Tripathi G. (ed.), *Cellular and Biochemical Sciences*. I.K. New Delhi: International Publishing House Pvt. Ltd. pp: 1090.
- Mazumdar D, Chatterjee AK, Barik AK, Datta A, Bera R, Seal A. 2014. Minimum Data Set and Principle Component Analysis to Assess Inhana Rational Farming (IRF) in Terms of Soil Quality Development Leading to Crop Response A Case Study from FAO-CFC-TBI Project on Organic Tea Cultivation in Maud T.E., Assam, India. *Int. j. innov. res. educ. sci.*, 1(2): 2349-5219.

- Nain L, Gaiind S, Pandey AK, Grover M, Sreekanthan SK, Vasudevan V. 2009. Practical Applications of Bioactive Compost in Organic Agriculture. In: Agriculturally Important Microorganisms Vol. II. Bhopal, India: Academic World International. pp: 225 – 246.
- Radovich TJK, Arancon N. 2011. Tea Time in the Tropics: A handbook for compost tea production and use. University of Hawaii: College of Tropical Agriculture and Human Resources.
- Ramesh P. 2008. Organic farming research in M.P. In: Organic farming in rain fed agriculture. Hyderabad: Central institute for dry land agriculture. pp:13-17.
- Seal A, Bera R, Chatterjee AK, Dolui AK. 2012. Evaluation of a new composting method in terms of its biodegradation pathway and assessment of compost quality, maturity and stability. Archives of Agronomy and Soil Science, 58 (9): 995-1012.
- Seal A, Bera R, Mukhopadhyay K, Mukherjee S. 2015. Recycling of poultry litter through Novcom composting method: A case study from Howrah Krishi Vigyan Kendra, West Bengal, India. J. Pharm. Sci. Innov., 4(3):176-179.
- Seal A, Saha S, Das A, Sarkar RK. 2013. Evaluation of Inhana Rational Farming Technology (IRF) as a Complete Package of Practice for Sustainable Organic Tea Cultivation – A Case Study from FAOCFC-TBI Project at Maud Tea Estate, Assam. In: Proceedings of 100th Indian Science Congress, Section: Agriculture and Forestry Science. Kolkata, 3-7 January 2013. pp: 199.
- Sengupta K, Bhui S, Mondal M. 2011. Novcom- an effective compost for black gram production. In: Proceedings of International Symposium on System Intensification Towards Food & Environmental Security. Crop and Weed Science Society, West Bengal, India, 24-27 February, 2011. pp: 94.
- Sevik, H., Cetin, M. 2015. Effects of water stress on seed germination for select landscape plants. Pol J Environ Stud, 24, 689-693.
- Thavaprakash N, Velayudham K, Djanaguiraman M, Subramanian P, Panneerselvam S, Prabakaran C. 2006. Influence of Plant Growth Promoters on Assimilate Partitioning and Seed Yield of Green Gram (*Vigna radiata* L.). Legume Res., 29 (1): 18 – 24.
- Trautmann NM, Krasny ME. 1997. Composting in the classroom. Cornell Waste Management Institute. Available from: <http://www.cfe.cornell.edu/compost/schools.html> [Accessed 27April 2016].
- Velayutham M, Mandal DK, Mandal C, Sehgal J. 1999. Agro-Ecological Subregions of India for Planning and Development. NBSS and LUP, Publ. No. 35, Nagpur, India. pp: 372.
- von Caemmerer S, Evans JR. 1991. Determination of the average partial pressure of CO₂ in chloroplasts from leaves of several C₃ plants. Aust J Plant Physiol, 18: 287–305.
- Weaver RW, Angle JS, Bottomley PS. 1998. Methods of soil analysis, Part 2: microbiological and biochemical properties Book Series No. 5. Madison, WI, USA: Soil Science Society of America.
- Xiang W, Zhao L, Xu X, Qin Y, Yu G. 2012. Mutual Information Flow between Beneficial Microorganisms and the Roots of Host Plants Determined the Bio-Functions of Biofertilizers. American Journal of Plant Sciences, 3: 1115-1120.
- Yigit, N., Sevik, H., Cetin, M., Gul, L. 2016. Clonal variation in chemical wood characteristics in Hanönü (Kastamonu) Günlüburun black pine (*Pinus nigra* Arnold. subsp. *pallasiana* (Lamb.) Holmboe) seed orchard. Journal of Sustainable Forestry, 35(7): 515-526.